

Gebrouwe in Limburg

Muziek: Tren van Enckevort & Jack Poels

Tekst: Jack Poels

Arrangement: Roel van Wijk

Deel 1 - Intro **Couplet 1**

16 8 4

This system contains the first 16 measures of the piece, labeled 'Deel 1 - Intro', followed by the first 8 measures of 'Couplet 1'. The key signature is B-flat major (two flats) and the time signature is 3/4. The notation includes a double bar line, a repeat sign, and a slur over the final four measures of the couplet.

33 **Tussenstuk**

This system contains measures 33 through 40, labeled 'Tussenstuk'. It consists of a single line of music with a double bar line at the end.

41 **Couplet 2** **Recouplet 1**

16

This system contains measures 41 through 56, labeled 'Couplet 2' and 'Recouplet 1'. It features a double bar line, a repeat sign, and a slur over the final four measures of the recouplet.

64

This system contains measures 64 through 72, continuing the 'Couplet 2' and 'Recouplet 1' section. It includes a double bar line at the end.

73 **Recouplet 2**

This system contains measures 73 through 81, labeled 'Recouplet 2'. It consists of a single line of music with a double bar line at the end.

82

This system contains measures 82 through 90, continuing the 'Recouplet 2' section. It includes a double bar line at the end.

91 **Couplet 3**

8 4

This system contains measures 91 through 98, labeled 'Couplet 3'. It features a double bar line, a repeat sign, and a slur over the final four measures of the couplet.

107 **Couplet 4**

7

This system contains measures 107 through 113, labeled 'Couplet 4'. It features a double bar line, a repeat sign, and a slur over the final four measures of the couplet.

119 **Drums**

4

This system contains measures 119 through 122, labeled 'Drums'. It includes a double bar line, a repeat sign, and a slur over the final four measures of the section.

127 **Deel 2 - Intro**133 **Couplet**

139



145

151 **Nacouplet**

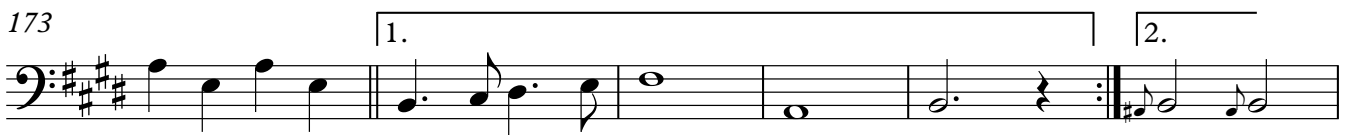
156

161 **Refrein**

167



173



179

Instrumentaal185 **Tussenstuk**